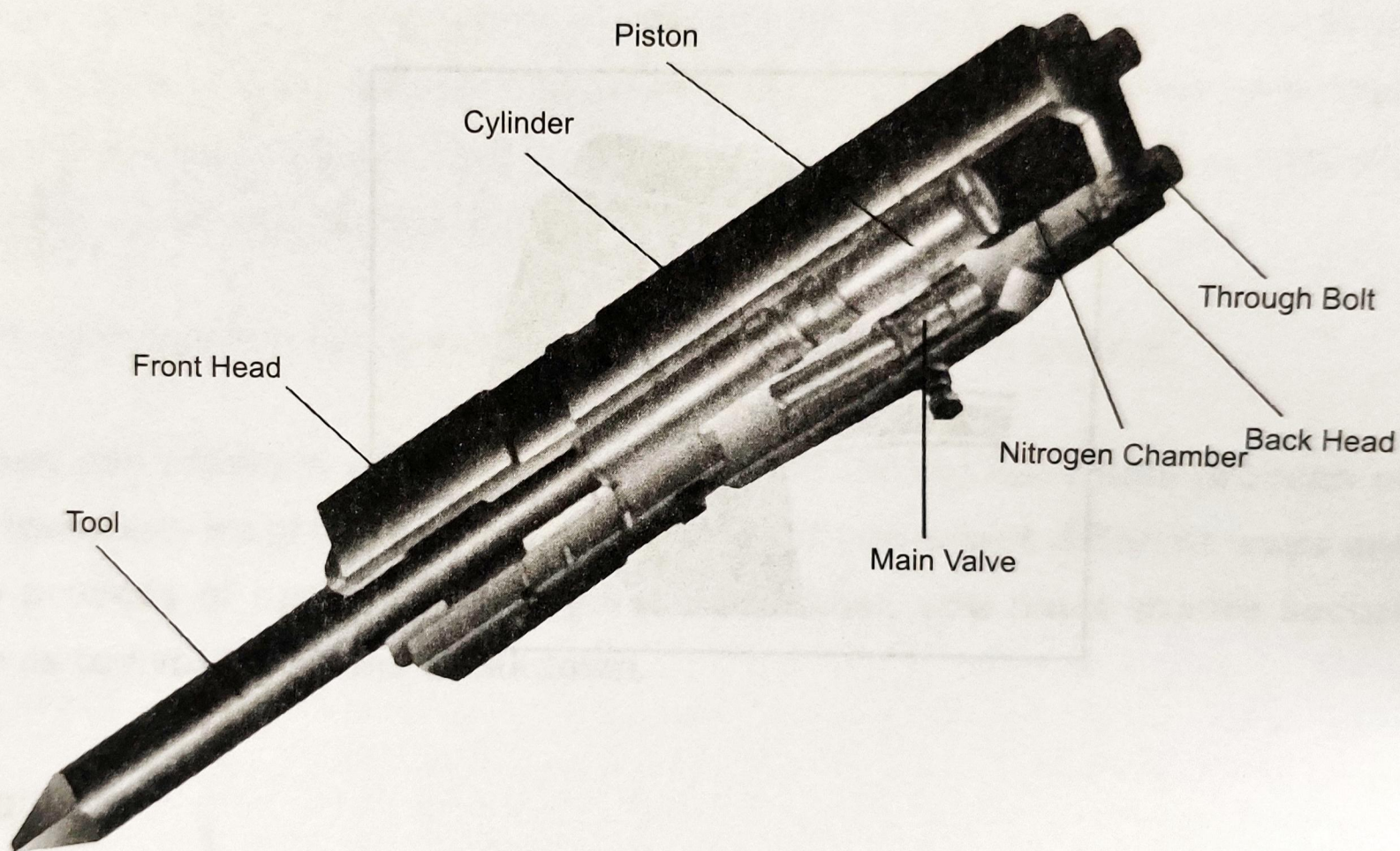


	Model	D40	D45	D53	D68	D75	D75/80
Body Weight	kg	53	71	89	156	214	215
Total Weight (Side/Top/Silence)	kg	70/ 72/ 102	95/ 95/ 129	158/ 158/ 180	263/ 343/ 361	334/ 409/ 450	335/ 410/ 451
Length (Side/Top/Silence)	mm	931/ 1116/ 1213	1091/ 1225/ 1329	1182/ 1347/ 1412	1363/ 1681/ 1664	1433/ 1742/ 1710	1484/ 1742/ 1755
Width (Side/Top/ Silence)	mm	216/ 216/ 255	255/ 216/ 255	275/ 275/ 255	350/ 350/ 350	350/ 380/ 350	350/ 380/ 350
Height (Side/Top/ Silence)	mm	354/ 208/ 260	431/ 200/ 260	498/ 286/ 260	681/ 474/ 475	748/ 475/ 475	755/ 475/ 475
Operating Pressure	kg/cm ² psi bar	90-120 1280-1704 88-117	90-120 1280-1704 88-117	90-120 1280-1704 88-117	110-140 1562-1988 108-137	120-150 1704-2130 118-147	120-150 1704-2130 118-147
Hydraulic Flow Range	l/min gal/min	15-25 4-7	20-30 5-8	25-50 6.6-13.2	40-70 10.5-18.5	50-90 13.1-23.6	50-90 13.1-23.6
Impact Frequency	bpm	800-1400	700-1200	600-1100	500-900	400-800	400-800
Diameter of Hose	mm inch	12.7 1/2	12.7 1/2	12.7 1/2	12.7 1/2	12.7 1/2	12.7 1/2
Diameter of Tool	mm	40	45	53	68	75	75/80
Weight of Tool	kg	4	8	9	18	22	24/26
Suitable Carrier	m ³	0.07	0.03-0.1	0.06-0.2	0.15-0.3	0.2-0.35	0.2-0.35
Suitable Carrier	ton	0.8-2.5	1.2-3.0	2.5-4.5	4.0-7.0	6.0-9.0	6.0-9.0
Valve Type		Inward	Inward	Inward	Inward	Inward	Inward
Accumulator Exists		No	No	No	No	No	No

Name of Part and Its Function

■ Structure

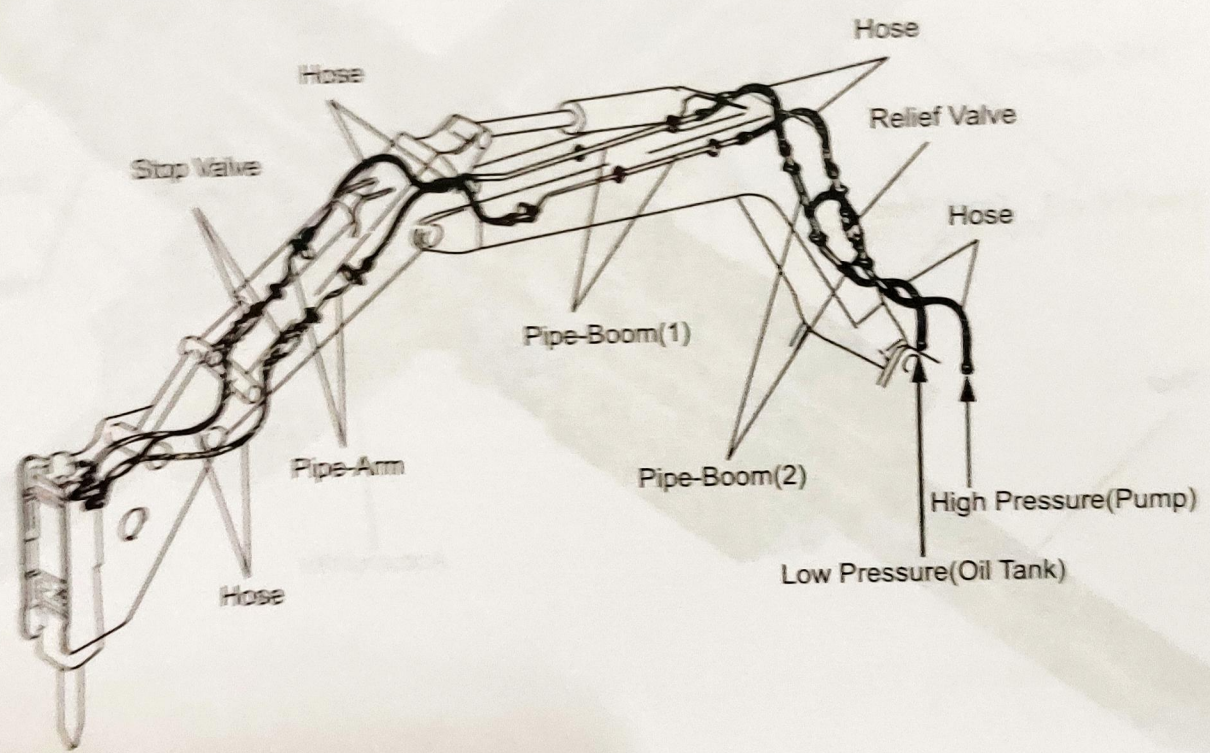
D40、 D45、 D53、 D68、 D75、 D75/80、 D85、 D100、 D125

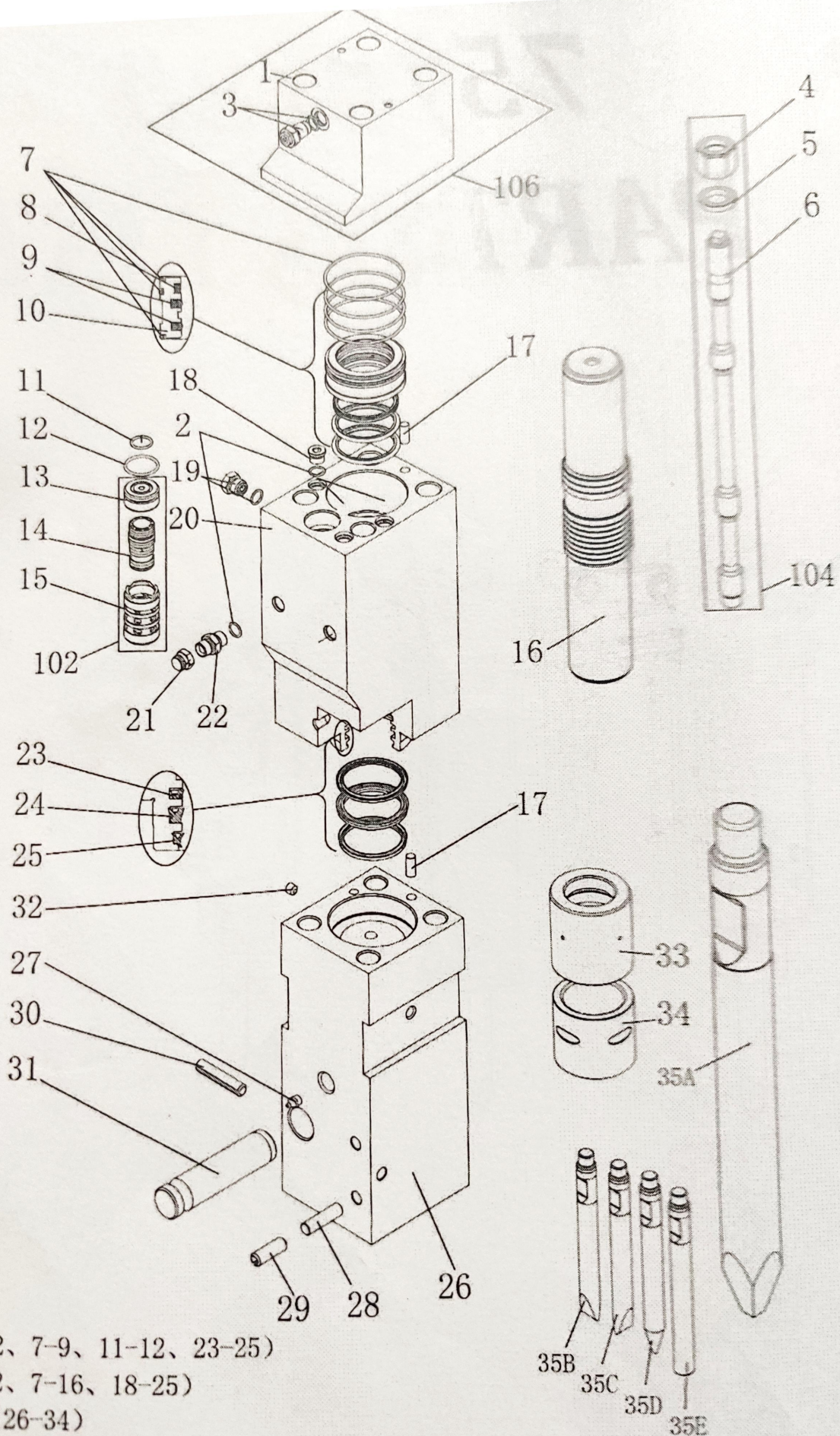


Name of Part and Its Function

Hydraulic Piping Kit

1. When you install hydraulic breaker on hydraulic excavator, be sure to use professional hydraulic pipe. Different excavators need to be equipped with different hydraulic pipelines. (Please contact local dealer.)





01 (2, 7-9, 11-12, 23-25)

07 (2, 7-16, 18-25)

08 (26-34)

35B
35C
35D
35E